

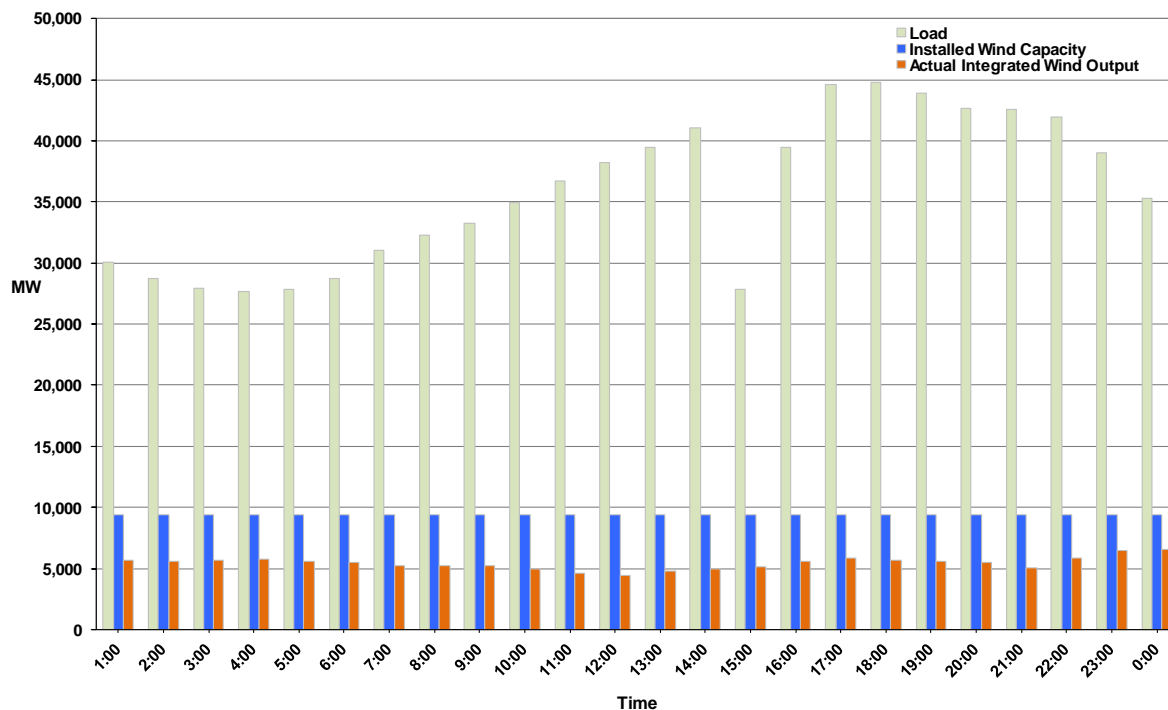


ERCOT Grid Operations Wind Integration Report: 05/18/11

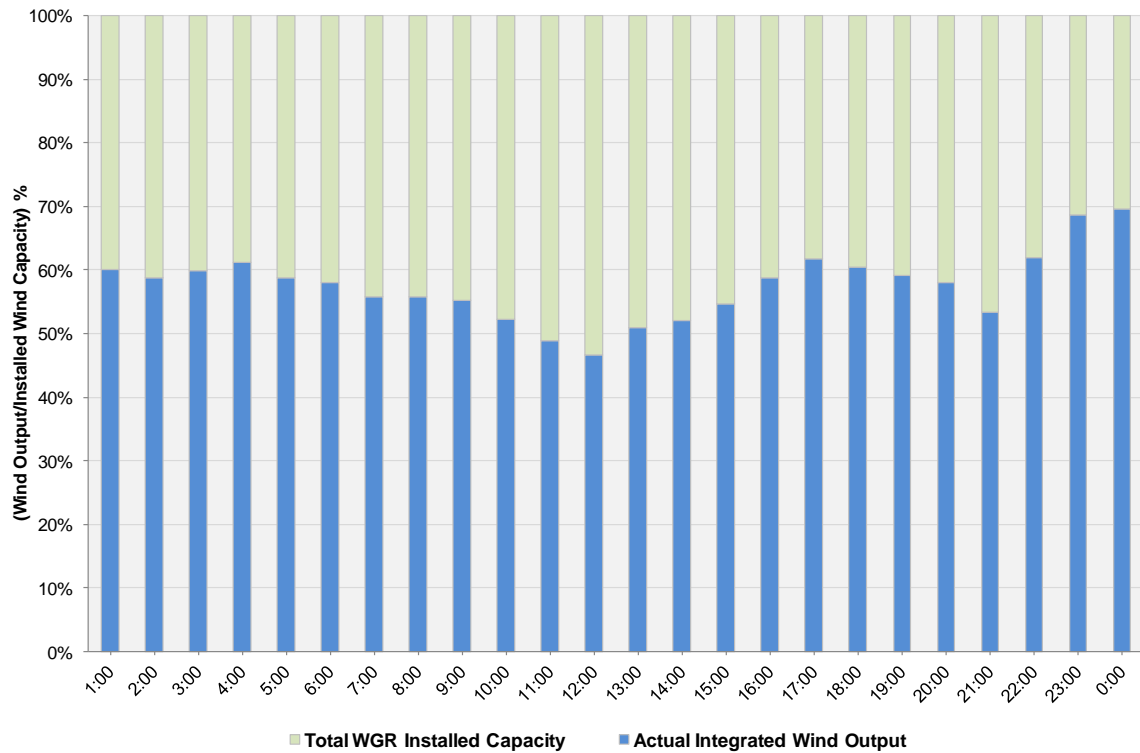
Peak Load	44,751 MW
Load Peak Hour	18
Wind Record 12/11/10	7,227 MW
Max Wind Value	6,603 MW
Wind Peak Time	23:03:00
Wind Integration %	17.90%

Note: PI connectivity was interrupted due to the EMS Migration from 14:40-15:06. This affected Total Load values for HE15 and HE16.

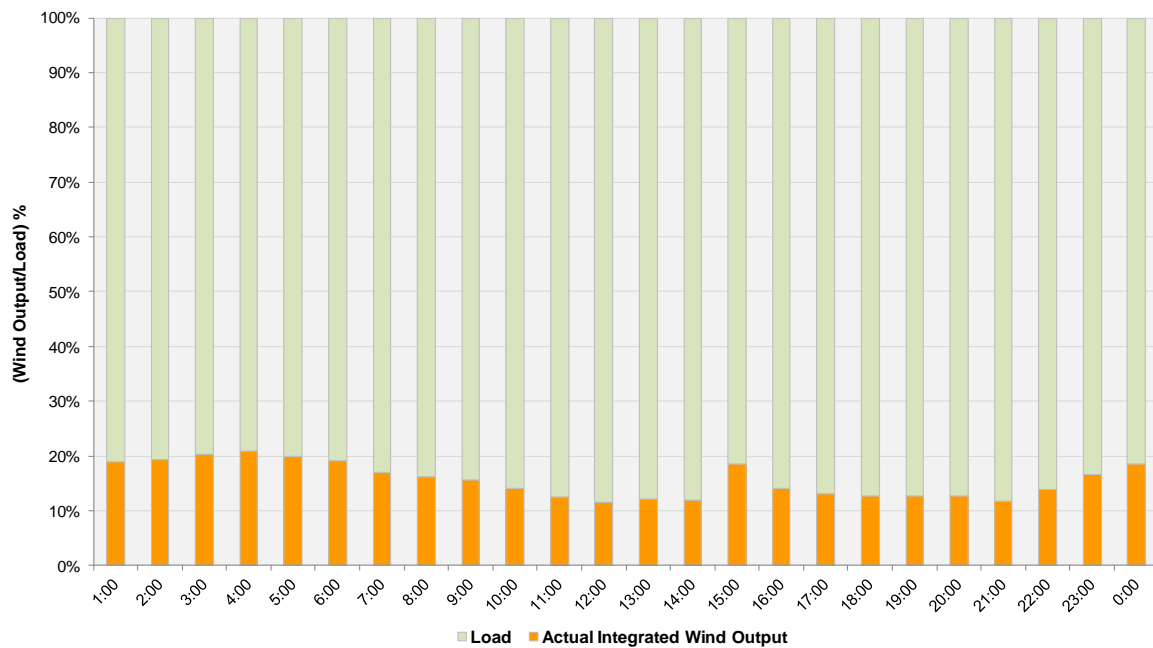
Hourly Average Actual Load vs. Actual Wind Output
05-18-2011



Actual Wind Output as a Percentage of the Total Installed Wind Capacity
05-18-2011



Actual Wind Output as a Percentage of the ERCOT Load
05-18-2011



ERCOT Load vs. Actual Wind Output 5/11/2011 - 5/18/2011

